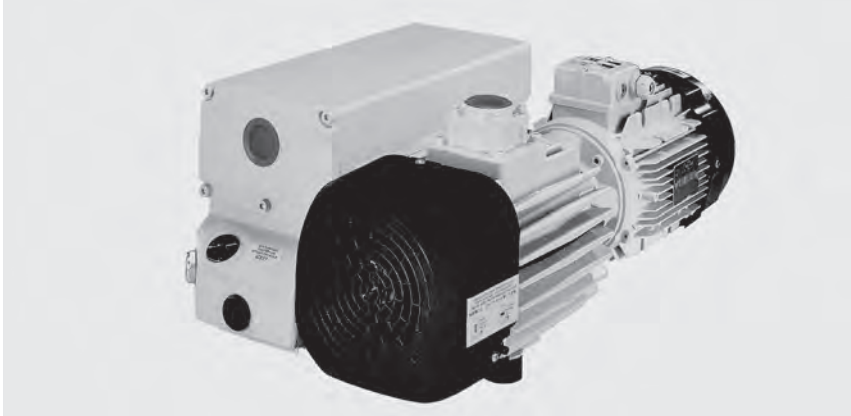
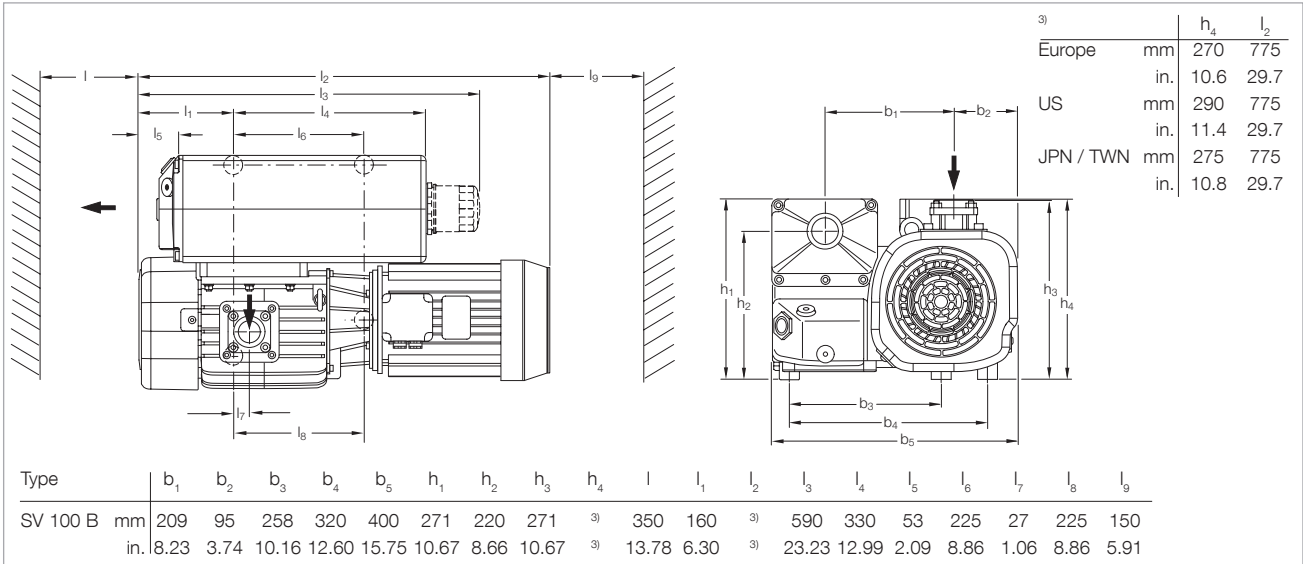


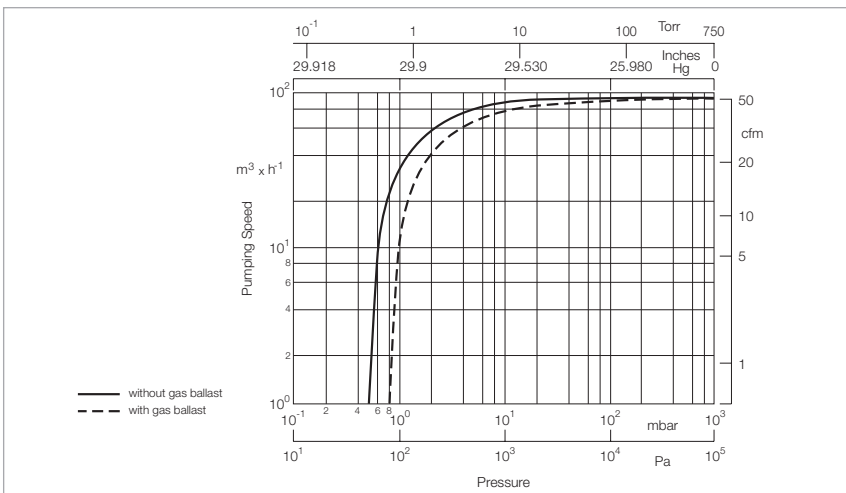
# SOGEVAC SV 100 B



SOGEVAC SV 100 B



Dimensional drawing for the SOGEVAC SV 100 B



Pumping speed characteristics of the SOGEVAC SV 100 B at 50 Hz  
(60 Hz curves at the end of the chapter)

**Technical Data****SOGEVAC SV 100 B**

		<b>50 Hz</b>	<b>60 Hz</b>
Nominal speed <sup>1)</sup>	m <sup>3</sup> /h (cfm)	97.5 (57.4)	117.0 (68.9)
Pumping speed <sup>1)</sup>	m <sup>3</sup> /h (cfm)	87.5 (51.5)	105.0 (61.8)
Ultimate total pressure without gas ballast <sup>1)</sup>	mbar (Torr)	≤ 0.5 (≤ 0.4)	
Ultimate total pressure <sup>1)</sup> with standard gas ballast <sup>2)</sup>	mbar (Torr)	≤ 1.5 (≤ 1.1)	
with small gas ballast <sup>2)</sup>	mbar (Torr)	≤ 0.8 (≤ 0.6)	
Water vapor tolerance <sup>1)</sup> with standard gas ballast <sup>2)</sup>	mbar (Torr)	30.0 (22.5)	
with small gas ballast <sup>2)</sup>	mbar (Torr)	10.0 (7.5)	
Water vapor capacity with standard gas ballast <sup>2)</sup>	kg/h (qt/hr)	1.60 (1.69)	1.70 (1.80)
with small gas ballast <sup>2)</sup>	kg/h (qt/hr)	0.45 (0.48)	0.60 (0.63)
Oil capacity	l (qt)	2.0 (2.1)	
Mean noise level <sup>3)</sup>	dB(A)	61	64
Admissible ambient temperature	°C (°F)	12 to 40 (54 to 104)	
Motor power	kW (hp)	2.2 (3.5)	3.5 (5.0)
Nominal speed	min <sup>-1</sup> (rpm)	1500 (1500)	1800 (1800)
Type of protection	IP	55-F	
Materials (materials in contact with the gas)		Steel, cast iron, Aluminium, Bronze, FPM (FKM), Glass, Polyamid 6.6, Filter material (Polymers, Paper), Epoxy resin & Glass fibre	
Weight (with oil filling)	(lbs)	92 (203)	93 (205)
Dimensions (L x W x H)			
Europe	mm (in.)	755 x 400 x 270 (29.7 x 15.7 x 10.6)	
US	mm (in.)	755 x 400 x 290 (29.7 x 15.7 x 11.4)	
JPN / TWN	mm (in.)	755 x 400 x 275 (29.7 x 15.7 x 10.8)	
Connection (inside thread) <sup>4)</sup>			
Intake	G or NPT	1 1/4"	
Exhaust	G or NPT	1 1/4"	

<sup>1)</sup> To DIN 28 400 and following numbers

<sup>2)</sup> Ordering Information, see next page

<sup>3)</sup> Operated at the ultimate pressure without gas ballast, free-field measurement at a distance of 1 m (3.5 ft)

<sup>4)</sup> Pumps with European and Japanese motors have G, pumps with US (NEMA) motors have NPT

## Ordering Information

## SOGEVAC SV 100 B

50 Hz

60 Hz

	Part No.
SOGEVAC SV 100 B <sup>1)</sup> with three-phase motor, without gas ballast, without oil filter 230/400 V, 50 Hz and 460 V, 60 Hz (CEI)	<b>960 500</b>
with three-phase motor, without gas ballast, with oil filter 230/400 V, 50 Hz and 460 V, 60 Hz (CEI)	<b>960 502</b>
with three-phase motor, with small gas ballast, without oil filter 230/400 V, 50 Hz and 460 V, 60 Hz (CEI)	<b>960 501</b>
230/460 V, 60 Hz and 400 V, 50 Hz (NEMA)	<b>960 511</b>
230/400 V, 50/60 Hz and 460 V, 60 Hz (CEI)	<b>960 521 <sup>2)</sup></b>
200 V, 50/60 Hz (JIS)	<b>960 516</b>
with three-phase motor, with small gas ballast, with oil filter 230/400 V, 50 Hz and 460 V, 60 Hz (CEI)	<b>960 503</b>
230/460 V, 60 Hz and 400 V, 50 Hz (NEMA)	<b>960 513</b>
230/400 V, 50/60 Hz and 460 V, 60 Hz (CEI)	<b>960 523 <sup>2)</sup></b>
200 V, 50/60 Hz (JIS)	<b>960 518</b>
with three-phase motor, with standard gas ballast, without oil filter 230/400 V, 50 Hz and 460 V, 60 Hz (CEI)	<b>960 505</b>
230/460 V, 60 Hz and 400 V, 50 Hz (NEMA)	<b>960 512</b>
230/400 V, 50/60 Hz and 460 V, 60 Hz (CEI)	<b>960 522 <sup>2)</sup></b>
200 V, 50/60 Hz (JIS)	<b>960 517</b>
with three-phase motor, with standard gas ballast, with oil filter 230/400 V, 50 Hz and 460 V, 60 Hz (CEI)	<b>960 507</b>
230/460 V, 60 Hz and 400 V, 50 Hz (NEMA)	<b>960 514</b>
230/400 V, 50/60 Hz and 460 V, 60 Hz (CEI)	<b>960 524 <sup>2)</sup></b>
200 V, 50/60 Hz (JIS)	<b>960 519</b>
Other voltages/frequencies <sup>2)</sup>	<b>upon request</b>
Filling with special oil <sup>2)</sup>	<b>upon request</b>
<b>Accessories</b>	
RUVAC adapter (WA/WS 251/501)	<b>971 448 740</b>
Exhaust filter cartridge AFE SV65/100B <sup>3)</sup>	<b>714 17 300</b>
<b>Spare Parts</b>	
Maintenance kit	<b>971 427 690</b>
Repair kit	<b>971 427 680</b>
Seal kit FPM (FKM)	<b>971 427 670</b>
Oil filter <sup>4)</sup>	<b>EK 960 05</b>
Oil filter bypass	<b>712 30 570</b>

<sup>1)</sup> Pumps with European and Japanese motors have G, pumps with US voltages motors have NPT without terminal board

<sup>2)</sup> Please indicate when ordering a pump

<sup>3)</sup> 2 cartridges needed per pump

<sup>4)</sup> Not included in maintenance kit