

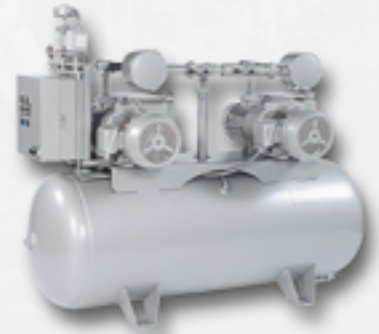
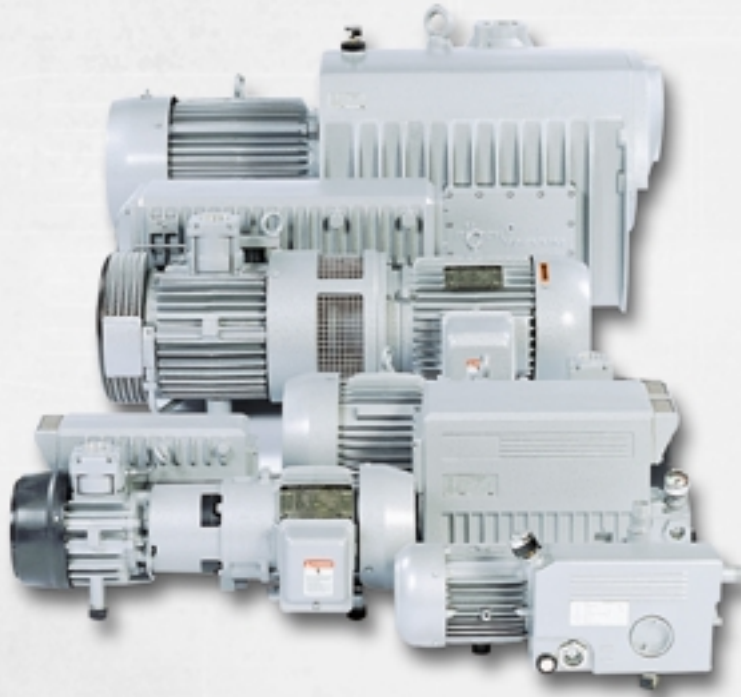


# R5 Series Vacuum Pumps and Systems



# R5 Series Rotary Vane Vacuum Pumps & Systems

CHAMBER 1/239.3498



Duplex tank mounted system is one of many standard configurations.



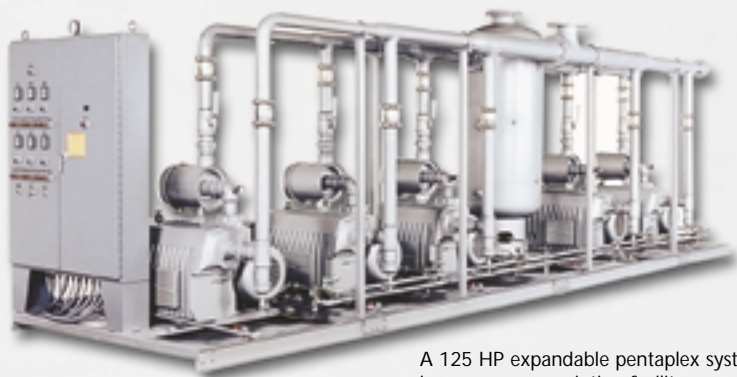
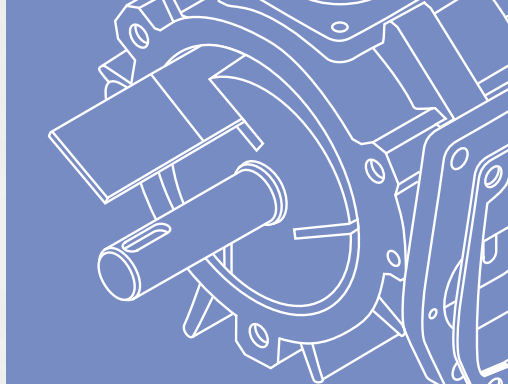
Duplex expandable model uses a common skid for mounting vacuum pumps, electrical controls, and a vertical receiver.

The modular designed Busch R5 series rotary vane vacuum pumps are single stage, air-cooled, and direct driven. This oil-recirculating design is one of the simplest and most reliable vacuum pumps available on the world market. These rugged pumps are used in a variety of industries such as packaging and food processing, rubber molding, thermoforming, printed

circuit board testing, hospitals, laboratories, robotics, vacuum lamination, printing, and many others. Displacements range from 3 to 1130 CFM. Three models are available: the RC for applications to 15 torr (29.3" Hg); the RB for applications to 2 torr (29.8" Hg); and the RA for applications to 0.5 torr (29.9" Hg).

## R5 Advantages

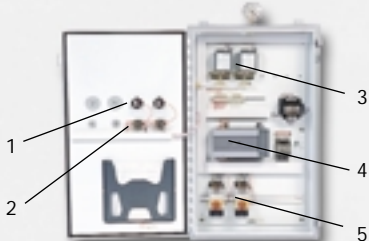
- Compact, simple design for easy installation and low maintenance
- Air-cooled, requiring no water
- Direct drive, eliminating belts and gears to loosen or wear
- Oil mist eliminator for 99.9% oil-free exhaust
- No special oil required
- Quiet operation
- Water-cooled versions available



A 125 HP expandable pentaplex system used in a newspaper printing facility.



Mechanical Expansion Module includes pump, filters, piping, and pre-drilled stand or skid for quick and easy installation onto system frame.



Components of the Electrical Expansion Module quickly fasten into pre-drilled positions in the control panel. They include: 1) Hour meter, 2) H-O-A switch, 3) Vacuum switch, 4) EEPROM, and 5) Motor starter.

## Applications

- Packaging
- Rubber molding
- Thermoforming
- Printed circuit board testing
- Hospitals
- Laboratories
- Printing
- Woodworking
- Lamination and many others

## R5 Vacuum Systems and R5 Expandable Vacuum Systems

Centrally located Busch R5 vacuum systems reduce both maintenance and energy costs compared to multiple single pumps.

Busch offers over 300 standard vacuum systems plus custom designed systems for a wide range of applications in many different industries.

Busch application engineers will work with you to determine which vacuum system configuration meets your requirements.

## Laboratory Central Vacuum Systems

Designed specifically for laboratories, these Busch vacuum systems are equipped with a manual or automatic purge assembly to remove condensable vapors from the pump prior to shutdown. They also feature special seal materials; corrosion resistant components in the exhaust box; and an exhaust flange adaptor to permit remote exhausting of gases. Busch laboratory systems are available in many configurations.



Vertical simplex laboratory system with manual purge assembly.

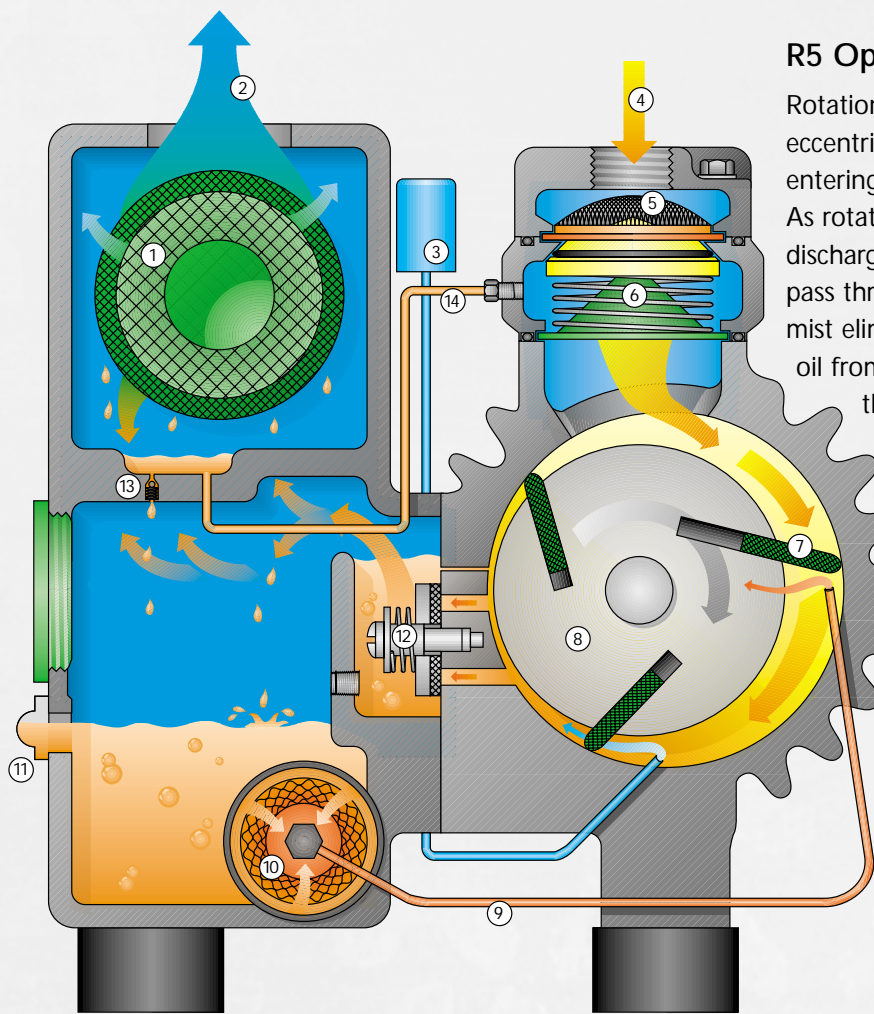
Expandable duplex laboratory system with automatic purge assembly ▶



## Busch R5 System Advantages

- Expandable with easy-to-install mechanical and electrical modules
- Remote location reduces noise and heat near work stations
- Lower operation and energy costs
- Automatic alternation for even pump wear
- Easy access for servicing
- Backup pump eliminates downtime
- Air-cooled pumps eliminate the expense of water use and disposal





## R5 Operating Principle

Rotation of the pump rotor, which is mounted eccentrically in the pump cylinder, traps entering vapor between rotor vane segments. As rotation continues, vapor is compressed and discharged into the exhaust box. Vapors then pass through several stages of internal oil and mist eliminators to remove 99.9% of lubricating oil from the exhaust. Oil is then returned to the oil reservoir. Additional features include an automotive type spin-on oil filter, and a built-in inlet anti-suckback valve that prevents the pump from rotating backwards. A built-in gas ballast is available on the RA version, which permits pumping with high water vapor loads.

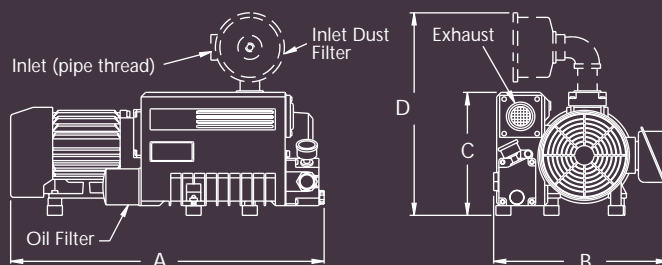
- |                        |                           |
|------------------------|---------------------------|
| 1. Oil Mist Eliminator | 8. Rotor                  |
| 2. Exhaust             | 9. Main Oil Feed Line     |
| 3. Gas Ballast (RA)    | 10. Spin-On Oil Filter    |
| 4. Inlet               | 11. Oil Sight Glass       |
| 5. Inlet Screen        | 12. Exhaust Valve (RA)    |
| 6. Anti-Suckback Valve | 13. Oil Return Valve (RA) |
| 7. Vane                | 14. Oil Return Line (RC)  |

## Technical Data

R5 Model	0004	0006	0010	0012	0016	0021	0025	0040	0063	0100	0160	0250	0400	0630	1000	1600
Nominal pumping speed (ACFM)	3.3	3.9	6	7	8.6	14	18	26	36	56	115	170	305	455	670	1030
Free air displacement (CFM)	3	4.2	7.1	8.5	11.2	15	20	28	41	63	117	180	330	490	704	1130
Max. sound level (dBA)	58	62	69	68	70	72	70	70	70	71	79	81	83	85	85	86
Motor size for 3 phase (HP)	NA	1/2	3/4	3/4	3/4	1	1 1/2	2	3	5	7.5	10	15	25	40	50
Motor size for 1 phase (HP)	3/8	1/2	1	3/4	1	1 1/4	1 1/2	2	3	5	NA	NA	NA	NA	NA	NA
Motor rotational speed (rpm)	1750	3550	1750	1750	1750	3550	1750	1750	1750	1750	1750	1750	1150	1150	1150	1150
Approx. oil capacity, (qt.)*	0.1	0.1	0.5	0.5	0.5	0.5	1.4	1.4	2.5	2.7	7	7	14	16	42	44
Inlet connections — NPT (inch)	3/8	3/8	3/4	1" Hose	3/4	1" Hose	1 1/4	1 1/4	1 1/4	1 1/4	2	2	3	3	6 (ASA)	6 (ASA)
End Vacuum Torr (RC)	NA	NA	15	15	15	15	15	15	15	15	15	15	15	15	15	15
End Vacuum Torr (RA)	5**	2**	0.5	2**	0.5	2**	0.5	0.5	0.5	0.5	0.5	0.5	0.5	0.5	0.5	0.5
Approximate Weight (lbs.)	27	28	49	42	60	42	106	120	172	198	416	460	1152	1525	2151	2833

\*We recommend Busch R-530 vacuum pump oil for most applications; Busch R-580 vacuum pump oil for models 0004, 0006 and 0021; and Busch R-590 for severe applications. \*\* RB version for Models 0004, 0006, 0012, and 0021. Consult factory for special applications.

## R5 Dimensions

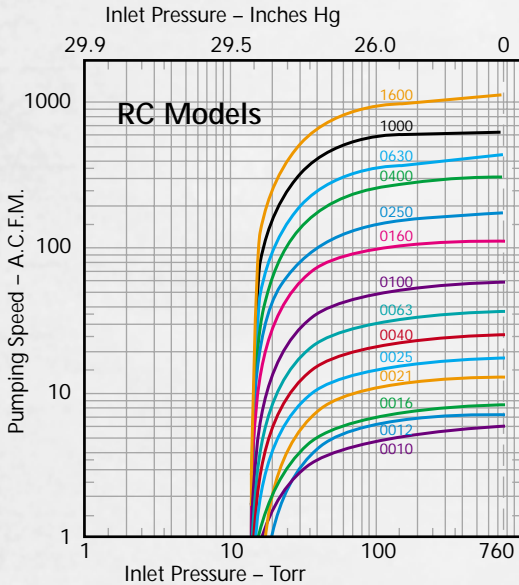
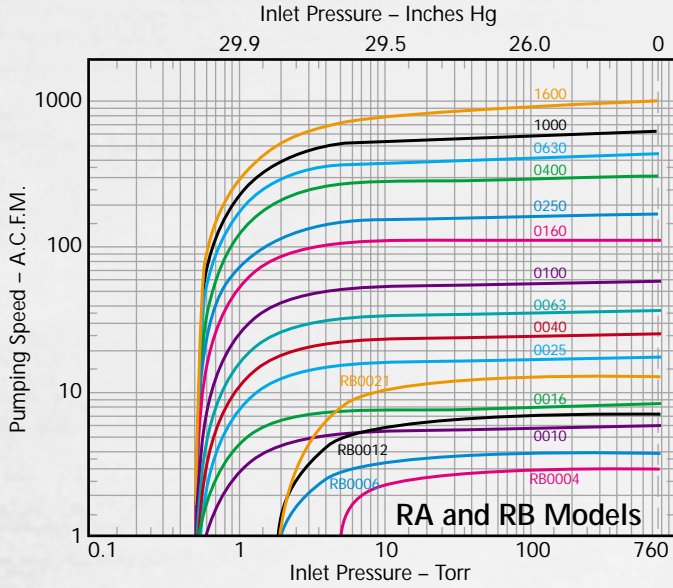


Model 0025 shown

Model	0004	0006	0010	0012	0016
A length	12 1/8	12	17 11/16	16 5/8	19 1/2
B width	7 1/8	7 1/2	10 3/4	11	8 1/2
C height	7	6 1/8	7 7/8	6 3/4	8
D height*	NA	NA	11 7/8	10 5/8	11 7/8

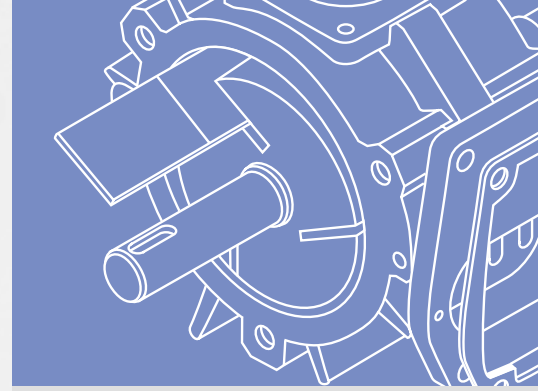
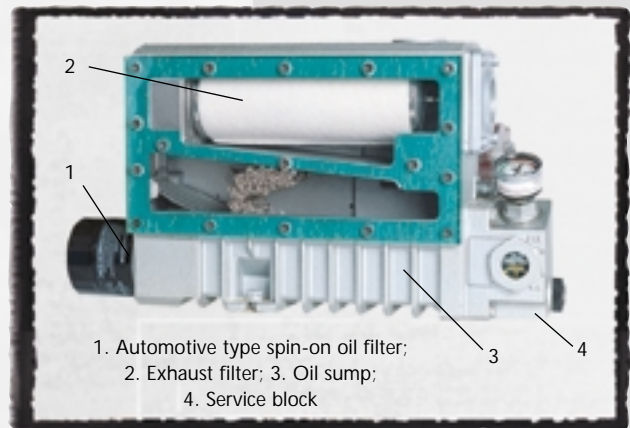
\*With filter; All dimensions in inches. Dimensions m

**Performance Data** (Based on 60 cycle motor, with gas ballast closed)



**Standard Equipment**

- TEFC motor
- Motor starter (optional)
- NPT inlet on most models
- Exhaust pressure gauge
- Anti-suckback valve
- Built-in exhaust filter
- Wire mesh inlet screen
- Non-metallic, non-asbestos vanes
- Vibration isolators
- Automotive type spin-on oil filter on most models
- Oil level sight glass



0021	0025	0040	0063	0100	0160	0250	0400	0630	1000	1600
17 <sup>1</sup> / <sub>4</sub>	26 <sup>1</sup> / <sub>8</sub>	26 <sup>13</sup> / <sub>16</sub>	28	29 <sup>1</sup> / <sub>2</sub>	36 <sup>1</sup> / <sub>8</sub>	39 <sup>5</sup> / <sub>8</sub>	54 <sup>3</sup> / <sub>8</sub>	70	75	87 <sup>3</sup> / <sub>4</sub>
11 <sup>7</sup> / <sub>16</sub>	14 <sup>9</sup> / <sub>16</sub>	14 <sup>9</sup> / <sub>16</sub>	19 <sup>5</sup> / <sub>16</sub>	19 <sup>5</sup> / <sub>16</sub>	26	25 <sup>11</sup> / <sub>16</sub>	36 <sup>3</sup> / <sub>8</sub>	37 <sup>3</sup> / <sub>4</sub>	45 <sup>5</sup> / <sub>8</sub>	45 <sup>5</sup> / <sub>8</sub>
7 <sup>3</sup> / <sub>16</sub>	10 <sup>3</sup> / <sub>8</sub>	10 <sup>3</sup> / <sub>8</sub>	11 <sup>7</sup> / <sub>8</sub>	11 <sup>7</sup> / <sub>8</sub>	16 <sup>1</sup> / <sub>4</sub>	17 <sup>13</sup> / <sub>16</sub>	26 <sup>1</sup> / <sub>2</sub>	26 <sup>1</sup> / <sub>2</sub>	36 <sup>3</sup> / <sub>4</sub>	36 <sup>3</sup> / <sub>4</sub>
10 <sup>5</sup> / <sub>8</sub>	17 <sup>1</sup> / <sub>8</sub>	17 <sup>1</sup> / <sub>8</sub>	18 <sup>1</sup> / <sub>4</sub>	18 <sup>3</sup> / <sub>4</sub>	25 <sup>1</sup> / <sub>8</sub>	26 <sup>1</sup> / <sub>2</sub>	42	42	57	57

ay vary depending on motor specs.





Busch - all over the world in industry

Busch, Inc  
516 Viking Drive  
Virginia Beach, VA 23452  
Phone (757) 463-7800  
FAX (757) 463-7407

[www.buschpump.com](http://www.buschpump.com)

1-800-USA-PUMP



ISO 9001 Registered Company

